

Electronic TV Liftup System

APTL55/APTL65/APTL80

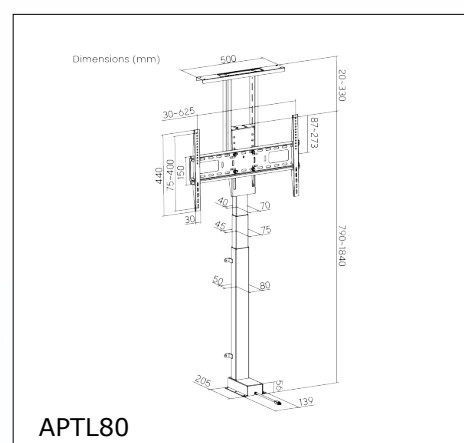
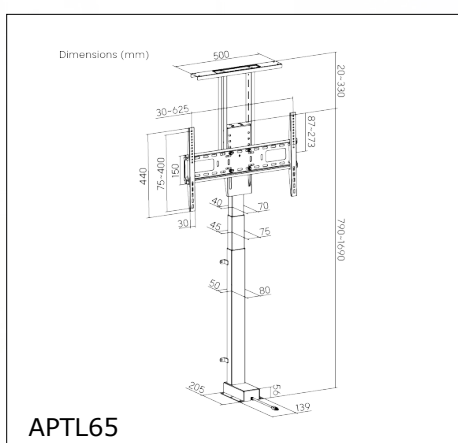
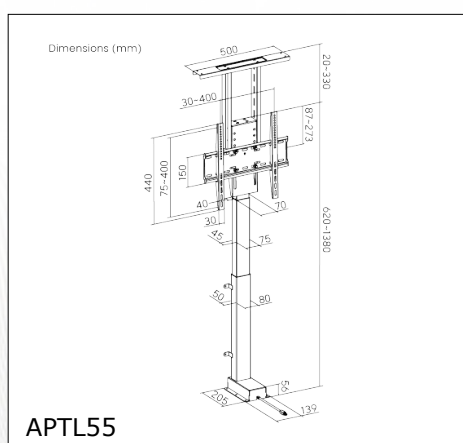


APTL55/APTL65/APTL80



Features

- Patented product mechanism, The rail can be cuttable.
- Intelligent electric control system.
- Wireless control door opening and closing.
- Two doors close in one piece, neat looking.
- Manual opening and closing is workable under power-off condition.
- Upgraded loading capacity structure.
- Door thickness: 18-45mm;
- Loading capacity: 80kg per door.



| Item Code | Screen Size | Max. Mounting Hole | Weight Capacity |
|-----------|-------------|--------------------|-----------------|
| APTL55 | 32"-55" | 400x400 | 60kg (132lbs) |
| APTL65 | 37"-65" | 600x400 | 60kg (132lbs) |
| APTL80 | 37"-80" | 600x400 | 60kg (132lbs) |